



LED Channel Letter Illumination System

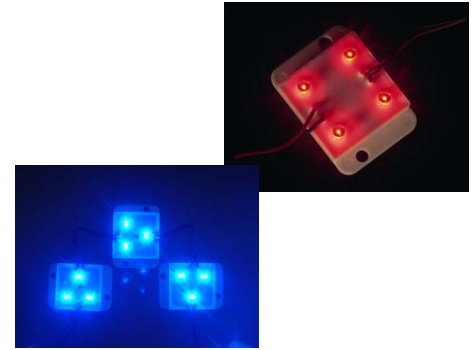


LED Module (5mm) ~ RW series ~ Constant current source

Leotek's LED Channel Letter Illumination systems have been designed & engineered using "state of the art" components providing ease of installation, maximum energy savings & reduced maintenance/labor costs. Our fully waterproof IP67 rated LED modules are proven to be an efficient replacement for Neon, fluorescent & other conventional light source. Indoor/Outdoor signage applications include Channel Letters (both new & retrofit installations). Internally illuminated Signs & other "Back-Lit" solid-state LED sign & lighting alternatives.

Technical Data

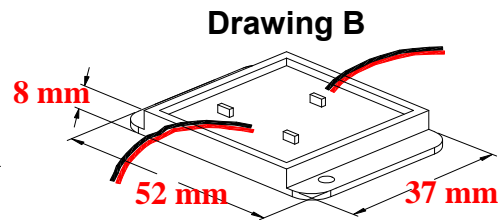
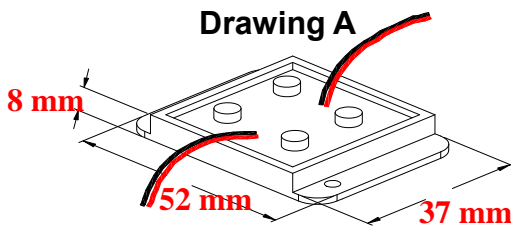
- * Input Voltage : DC 12V
- * Power Consumption : 0.4W / Each Module (Red, Amber, Orange)
0.8W / Each Module (White, Blue, Green)
- * Storage Temperature : -30°C~+ 85°C
- * Operating Temperature : -20°C~+ 60°C
- * Weight : 20g / Each Module
- * Module Size : 52mm (L) x 37mm (W) x 8mm (H)
- * Protection Rating : IP67
- * UL Recognized, CE approved, RoHS complied product



Specifications (Ta = 25°C)

Item No.	Radiation Color	Number of LEDs	Luminous Intensity (mcd) @ 25mA Typ.	View Angle 2θ1/2 (Degrees) Typ.	Drawing Outline
CLM-100R-RW	Red	4	1,600	100°	A
CLM-100E-RW	Orange	4	1,600	100°	A
CLM-100Y-RW	Amber	4	1,600	100°	A
CLM-100G-RW	Green	3	1,650	110°/ 80°	B
CLM-100B-RW	Blue	3	480	110°/ 80°	B
CLM-100W-RW	White	3	1,230	120°/ 140°	B

Note : Each roll consists of 100 modules that can be cut to the desired length.



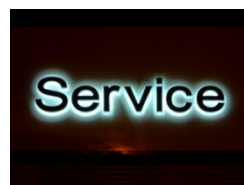
Application ~



Channel Letter



Decorative



Reverse Halo



Canopy



Leotek Electronics Corporation

ISO 9001 CERTIFIED MANUFACTURER

Website : www.leotek.com

