



# LED Signage Lighting Lite-Stik CL3 Series

**GREEN** Technology

## The Leotek LED Advantage

Save on energy consumption and maintenance costs, with easy to install High-Flux LEDs that provide bright, uniform light distribution to illuminate your company's most important asset, your Brand Image.



## Applications

Fluorescent and Neon Alternative for:

- Storefront Marquis Signs
- Cabinet Signs
- Pylon Signs
- Monument Signs
- Canopy Fascia
- Gas Pump Toppers
- ATM Surrounds



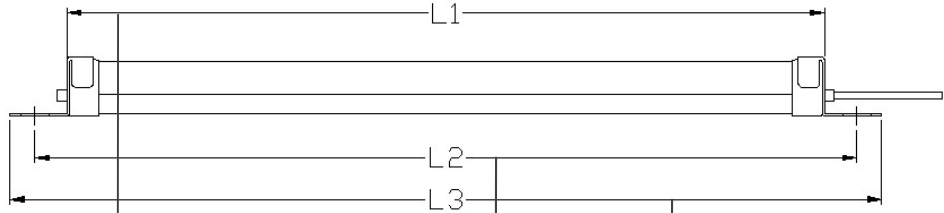
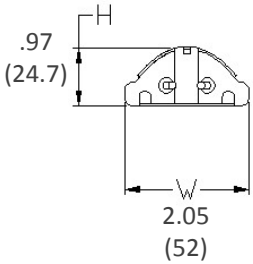
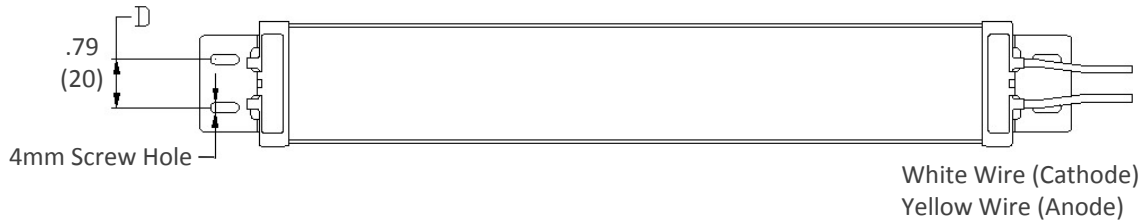
## Features and Benefits

- Significant energy and maintenance savings.
- Life span up to 8 times greater than fluorescent tubes.
- Environmentally friendly.
- Reduces glare with sharper visual clarity.
- Three color options.
- No cold start issues.
- Reduced lamp and ballast maintenance.
- Enhanced life and performance.
- Shatterproof and shock resistant.
- Maintains a minimum of 70% of the initial lumen intensity after 50,000 hours of operation.
- 5-Year Limited Warranty

## Technical Data

Power Consumption per Foot	: 7.5W	Operating Temperature:	: -40°F to 122°F (-40°C to 50°C)
Lumen Output per Foot	: 380 cd	Storage Temperature:	: -40°F to 185°F (-40°C to 85°C)
Input :	Constant Current Source	IP Rating:	IP66, Wet
CRI (Typical):	70	Weight per Foot:	0.7 lbs (0.34 kg)

# Mechanical Dimensions [units: inch (mm)]



CL3-26W3	24.3 (617)	25.4 (645)	26.2 (665)
CL3-36W3	36.3 (922)	37.4 (950)	38.2 (970)
CL3-46W3	48.3 (1227)	49.4 (1255)	50.2 (1275)
CL3-56W3	60.3 (1532)	61.4 (1560)	62.2 (1580)
CL3-66W3	72.3 (1836)	73.4 (1864)	74.2 (1885)

•Tolerance for all models: ±0.02 (0.5)

## Ordering Options

Example CL3-66W3:



**Strip Length (Lumen Output)  
[Power Consumption]{Required  
Driver Model No.}**

6: 6 feet (2282)[45.4]{LP1090}  
 5: 5 feet (1902)[37.8]{LP1040}  
 4: 4 feet (1522)[30.2]{LP1040}  
 3: 3 feet (1141)[22.7]{LP1025}  
 2: 2 feet (781)[15.1]{LP1020}

**LED Density**

6: 6 LED/ft  
 5: 5 LED/ft  
 4: 4 LED/ft

**Color**

W: cool white (5500K) ○  
 N: neutral (4100K) ●  
 L: warm white (3050K) ●

**Driver**

3: 110/220Vac

## Standard Conformance



**LEOTEK USA**  
 1330 Memorex Drive  
 Santa Clara, CA 95050  
 Toll Free: (888) 806-1188  
 Fax: (408) 980-0538

**LEOTEK TAIWAN**  
 No. 50 Lung-Yuan 7<sup>th</sup> Road  
 Lung-Tan, Tao-Yuan Hsien 325  
 Taiwan  
 Telephone: 866-3-4995939  
 Fax: 866-3-4995930

[www.leotek.com](http://www.leotek.com)  
[www.liteon.com](http://www.liteon.com)

