



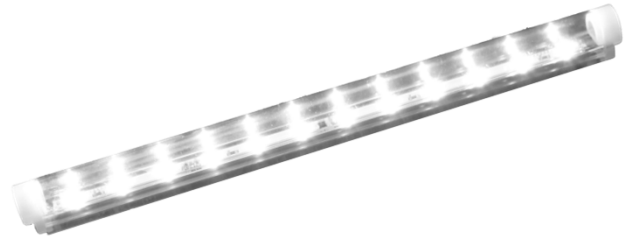
The Leader in Electro-Optics Technology

LED GREEN Technology

a subsidiary company of LITEON®

LED Traffic Cabinet Light CL Series

Installation Guide



This procedure is designed as an installation aid. Skilled trades people that are familiar with general construction and electrical installation techniques should perform the installation. Licensed electricians should provide electrical installation connections. Installations and connections should be done in accordance with all national and local codes and permits. In no way is this document intended to construe warranty or fitness of use of the products described, nor is it intended to provide safety instruction for those installing the product.



WARNING

Before proceeding with installation or service maintenance of this product:

- Disconnect power to reduce electrical shock risk.
- Review the entire Installation Guide.
- Inspect this properly packaged product for any damage that may have occurred during transit.
- Verify product application complies with manufacturer design recommendations.
- Verify the availability of necessary tools and incidental material.
- Verify applicable code requirements. Field assembly and installation are subject to acceptance by local inspection authority.
- Appropriate safety equipment to be determined by end user, per applicable safety standards and precautions.

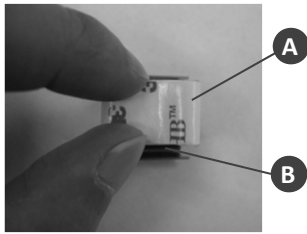


Fig. 1

Step 1 - Remove the paper liner and attach the 3M™ double-sided adhesive pad **A** to the mounting clip **B**.

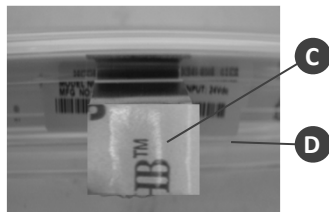


Fig. 2

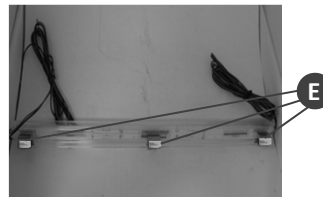


Fig. 3 - 18" model shown

Step 2 - Attach the mounting clip **C** to the CL Cabinet Light **D**. Use two adhesive pads for the 12" model, and three adhesive pads **E** for the 18" model.

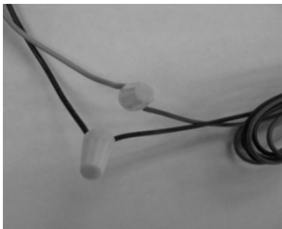


Fig. 4

Step 3 - On one side of the CL Cabinet Light: Connect the red wire (+) to the gray wire on the power supply, and connect the black wire (-) to the black wire on the Leotek power supply. If the Leotek power supply is not used, please directly connect the cabinet light to a 24VDC voltage source in the traffic cabinet (**a constant voltage source is recommended**) and skip **Step 4**.

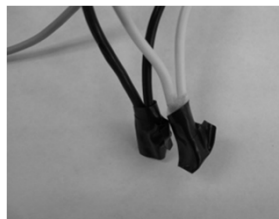


Fig. 5

Step 4 - From the Leotek power supply: Connect the green wire to ground, the white wire to the neutral line, and the black wire to another AC hot line.

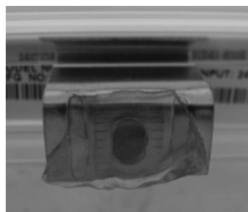


Fig. 6

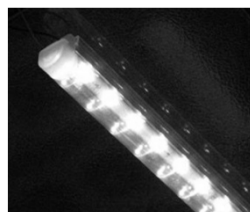


Fig. 7

Step 5 - Remove the paper liner from the adhesive pads. Attach the CL Cabinet Light to the top or side of the traffic cabinet chassis, or below shelves.